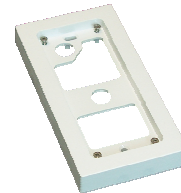


Manual – PR 1000 – Prox Reader

PR 1000 is a flexible Prox Reader for a lot of applications: At normal work the yellow LED is lit (the left one). Activation by a confirmed Transponder /Card, the yellow and the green LED are lighting for the activation time. If not confirmed ... the red LED is lighting shortly.

There is a buzzer integrated also for indication, either confirmed/not confirmed Transponder /Card (2 different sounds). Additional the buzzer can be activated directly by GND on the brown wire.



Stainless steel plate for montage

Frame for montage

The Prox Reader can be mounted directly on a wall/wood/etc, or by the Plate or the Frame.

The Transponders/Cards (TR) are stored in positions from 1 to 1000. At delivery all positions are empty. The 1. TR shown after power up will be the MT (Mastertransponder). The next shown will be CT (Control Transponder). Now the Prox is ready for programming. (See page 3 for reset the PR1000) UT (User Transponder)

Transponder/Cards for PR1000

Pos	TR	Name	Pos	TR	Name	Pos	TR	Name
00	MT		21					
0	CT		22					
1	UT 1		23					
2	UT 2		24					
3	UT 3		25					
6			26					
7			27					
8			28					
9			29					
10			30					
11			31					
12			32					
13			34					
14			35					
15			36					
16			37					
17			38					
18			39					
19			40					
20			41					
			42			1000		

Programming the Transponder/Cards (TR) *impulse*:

Show MT 1 time (yellow LED is flashing) (The Prox is now in programm mode), show a new TR, will be confirmed by sound and flashing. Show the next etc – there is space for 1000 TR. All TR will be stored from pos 1 and the following numbers up. The time up for programming mode is app 10 sec after every programming. The programmed transponder will activate the output for app. 5 sec. (impulse)

Programming the Transponder (TR) *toggle*:

Show MT 2 times after each other (MT2) (green LED flashing). Show a new TR, will be confirmed by sound and lightening. The TR programmed will activate the output as a toggle. The Positions can be mixed up for either input/toggle TR's. All TR will be programmed on the first free space in the positions. (position)

Delete TR:

Show MT 3 times (reed LED flashing). Show the TR/TR's you wish to delete. That/those positions are now free.

Delete a TR not present:

Show MT 4 times (green and reed LED flashing). Show the transponder programmed just before that TR you want to delete. E.g.: TR 12 has to be deleted. MT 4 times - show TR from pos 11 and TR 12 is now deleted. Pos 12 is free now. E.g.2.: Delete TR 13 – show MT 4 times – show TR from pos 11. etc. NB: All new programmed TR will be stored on the first free places.

Delete TR on pos 1:

Show MT 5 times (All LED flashing). TR on pos 1 is deleted now.

Installing your new PR1000 Prox Reader

Wire Colour Prox – Inst	Function	Description	Assembly box Connection nr
Reed	+ 12 V DC	Supply, 9 - 17 V/ 100mA	13
Black	0 V, GND	Supply	14
Yellow	OC output, 500 mA. 0V active	Output for door opening, relay, alarm etc.	20
Green/white	Sabotage loop	Short cut in the Keypad	17/18
Brown	0V active buzzer/ Hold	Extern controlling/Hold function	19
Orange	0V active red LED	Extern controlling	16
Blue	0V active for REX . REX -time as for impuls	Output for door opening, relay, alarm etc.	15
From Inst	Supply to the system	AC/DC 12-27 V	7
From Inst	Supply to the system	AC/DC 12-27 V	8
To door	Relay	NC	10
To door	Relay	C	11
To door	Relay	NO	12
To REX	REX buttom	For door opening	5
To REX	REX buttom	For door opening	6
Signal/ door.	Buzzer/ Hold	External buzzer/Door contact	9 / 9 and 5

Information in the frame is for using the assembly box in connection to the CT1000/PR1000

Advanced options in the PR1000 Prox Reader:

Generally it is the installer who is setting up the parameters /programming of the Prox Reader.

Reset the PR1000:

Make a short cut between the yellow and the braun core. (It can be done moving the jumper up in the assamby box art 460090) Connect the power. Remove the short cut. Now the Prox Reader is back in factory default. No MT, CT or TR is active. All is resat. Yellow LED is flashing. The first TR shown will be the MT. The next TR shown will be CT. PR1000 is now ready for programming the user transponder (Transponders up to 1000 pcs)

Set up by the CT (Control Transponder):

CT can be used in connection to the MT and all parameters can be set up as the following:

Configuration of the Prox Reader:

				Description	
Indication*	Action	Indication	Action	Programming	New value
Ø Ø Ø	CT1	--ØØ	MT	Buzzer on/off, repeat	On =Ø, Off =O,
-- Ø Ø	CT2	-- ---	MT	Shift Locked Indication 1-8, repeat MT to choose	1 – 8, See the LED indication 1- 8
-- -- --	CT3	-- ---	MT	Shift Unlocked Indication 1-8, repeat MT to choose	1 – 8, See the LED indication 1- 8
-- -- --	CT4	-- Ø O	MT	Not in function for PR1000	
-- Ø O	CT5	-- Ø Ø	MT	Not in function for PR1000	
-- Ø Ø	CT6	-- O Ø	MT	Not in function for PR1000	
-- O Ø	CT7	-- Ø Ø	MT	Set OC output time.	Time between CT7 and MT is impuls time. 0=toggle
-- Ø Ø	CT8	Ø Ø Ø	MT	Save and Exit	All the chosen parameters will be saved and in function
Ø Ø Ø	CT9			Exit without save, same as time up	

*: **Explanation to the Indications: LED indication:** (default: Yellow for locked, Yellow and green for Unlock)

Indication	Yellow LED	Green LED	Red LED
Ø Ø Ø	On	Off	Off
-- Ø Ø	Different	On	On
-- Ø O	Different	Flash	Off
Ø Ø Ø	Flash	Flash	Flash

Examples for some settings:

Save new set up: CT8 – MT.

Leave programming without saving: Wait for time up. LED goes back to normal lightening.

Examples:

UT = User Transponder. UT1 = User Transponder 1, etc

Example 1:

MT1, UT1, UT2, UT3: 3 User Transponders are now programmed (for impulse). Placed in pos 1 to 3.

Example 2:

MT1, UT1, UT2, MT2, UT3, UT4: 2 User Transponders are now programmed (for impulse) and 2 for Toggle.

Example 3:

MT1, MT2, MT3, UT3: User Transponder 3 is deleted.

Example 4:

CT2, MT3: LED lighting for normal use is now changed to nr 3 (as shown on the Prox Reader) CT4, CT5, CT6, CT7, CT8 and MT – then the setup is saved in the Reader.

Specifications:

Supply: +9 – 17 V DC, 30 mA

Output: max 500 mA

Temperature: -30 to + 80 C

Humidity: 100%, IP 67

Color: Black, optional white.

Dimension: HxWxT (mm) 130x50x8

Cable: 8 core, 1 m

Item number:

Item nr.: 460100 CT1000 Keypad

Item nr.: 460090 CVT6 Assemb Box

Item nr.: 460101 PR1000 Prox Reader

Item nr.: 460099 CT1000 Keypad and CVT6 Ass box

Good look and thank you for choosing Conlan.

www.conlan.dk

CONLAN
double security systems